

Ungarische Tänze

für Orchester

1

Kleine Flöte
(ad lib.)

ausfällt

Johannes Brahms

Instrumentiert von Martin Schmeling

*** Nr. 5

Allegro

Viol. Klar.

f passionato

Viol. I

p legg

p legg

ff *poco ritard. -*

in tempo

Vivace

f

poco ritard. -

in tempo

poco rit

in tempo

poco ritard. -

in tempo

p legg *p*

poco ritard. -

in tempo

Tempo I

Viol. Klar.

f passionato

Viol. I

ff *p legg*

ff

Ob. I

ff

Copyright 1928/1956 by Breitkopf & Härtel

Tchaikovsky — Sleeping Beauty
PICCOLO

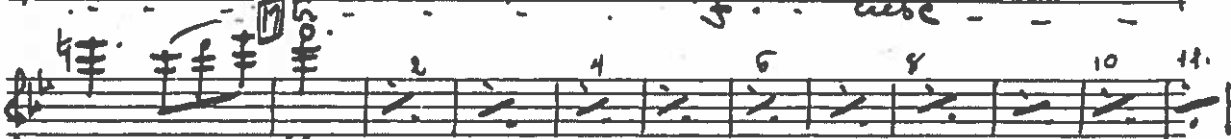
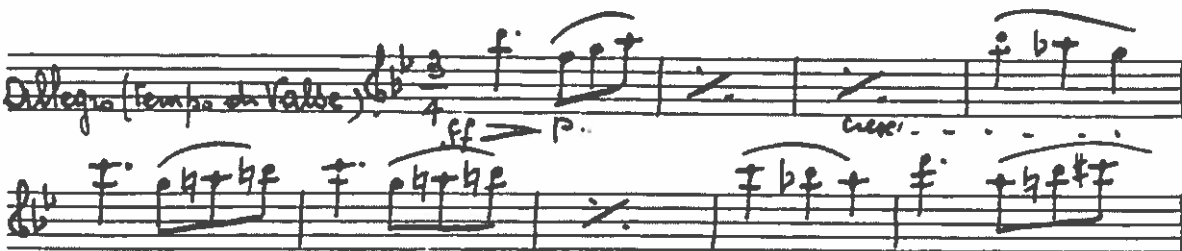
18

190

202



No 6 WALSE



Tchaikovsky — Sleeping Beauty
PICCOLO

290

19.

Musical notation for Piccolo, measures 290-291. The first staff shows a melodic line starting with a half rest, followed by eighth notes. The second staff shows a similar melodic line with a fermata over the final note.

16. SCENE

Musical notation for String, measures 292-293. The tempo is marked *Andante*. The first staff shows a melodic line with a fermata. The second staff shows a melodic line with a fermata. The tempo is marked *Animato*.

Musical notation for String, measures 294-295. The first staff shows a melodic line with a fermata. The second staff shows a melodic line with a fermata. The tempo is marked *ff*.

Musical notation for String, measures 296-297. The first staff shows a melodic line with a fermata. The second staff shows a melodic line with a fermata. The tempo is marked *fff*.

Musical notation for String, measures 298-299. The first staff shows a melodic line with a fermata. The second staff shows a melodic line with a fermata.

Musical notation for String, measures 300-301. The first staff shows a melodic line with a fermata. The second staff shows a melodic line with a fermata.

Musical notation for String, measures 302-303. The first staff shows a melodic line with a fermata. The second staff shows a melodic line with a fermata.

Empty musical staff.

Empty musical staff.

Empty musical staff.