

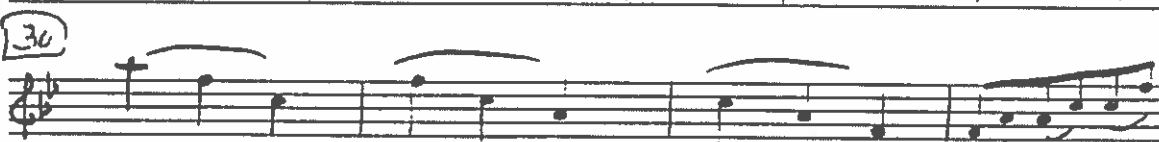
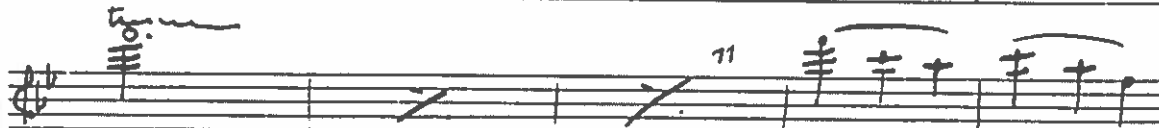
Tchaikovsky — Sleeping Beauty

FLUTE II

23

10 6 VALSE

All<sup>o</sup> Tempo 3/4 Valse



Tchaikovsky — Sleeping Beauty

FLUTE II

24.

73 sf

88

90

106

114

119

dim

Tchaikovsky — Sleeping Beauty  
FLUTE II

25

Handwritten musical score for Flute II, measures 121-242. The score is written on ten staves, with the first two staves containing a key signature change to B-flat major (two flats). The notation includes various musical symbols such as notes, rests, slurs, and dynamic markings. Measure numbers are circled or boxed at the beginning of several staves: 121, 130, 139, 141, 172, 177, 209, 211-227, 236-246, 242, and 244. The word "cresc." is written above the staff for measures 130-139, and "cresc." is written below the staff for measures 172-177. The score concludes with a double bar line and a final measure number of 244.

## FLUTE II

24.

245

Handwritten musical notation for the first staff of 'The Rose Tree'. The staff is in treble clef with a key signature of one flat (B-flat). The melody begins with a quarter note G4, followed by a quarter note A4, and then a quarter note B-flat4. A slur covers the next two notes, A4 and G4, which are both quarter notes. This is followed by a quarter rest, then a quarter note F4, and another quarter rest. The staff ends with a double bar line.

251

Handwritten musical notation for the second staff, starting with a circled '281'. The notation is on a five-line staff with a treble clef. It begins with a 7-measure rest, followed by a half note G4, a half note A4, and a half note B4. The next measure contains a half note C5, a half note D5, and a half note E5. This is followed by a 7-measure rest, then a half note F5, a half note G5, and a half note A5. The final measure contains a half note B5, a half note C6, and a half note D6. The notation is written in a fluid, handwritten style with some slurs and ties.

Handwritten musical notation for the first staff of the song 'The Rose Tree'. The staff is in treble clef with a key signature of one flat (B-flat). The melody consists of eighth and quarter notes, with some notes beamed together. There are some handwritten corrections or additions above the staff, including a '2' and some vertical lines. The word 'down' is written below the staff at the end of the first measure.

266

Handwritten musical notation for the first staff of 'The Rose Tree'. The staff is in treble clef with a key signature of one sharp (F#). The melody begins with a quarter note G4, followed by a quarter note A4, and then a quarter note B4. Above the B4 note is a sharp sign (#) and a bracketed '266'. The staff continues with a quarter note A4, a quarter note G4, and a quarter note F#4. The staff ends with a double bar line and a repeat sign.

Handwritten musical notation for the first staff of 'The Rose Tree'. The staff is in treble clef with a key signature of one sharp (F#). The melody consists of the following notes: G4 (quarter), A4 (quarter), B4 (quarter), C5 (quarter), B4-A4 (beamed eighth notes), G4 (quarter), F#4 (quarter), E4 (quarter), D4 (half). There are slurs over the first four notes and the last four notes. The word 'cresc.' is written below the first measure.

125

Handwritten musical notation for the second system of 'The Rose Tree'. The notation is on a single staff with a key signature of one flat (B-flat) and a common time signature (C). The melody begins with a quarter rest, followed by a quarter note G4, an eighth note A4, a quarter note B-flat4, and a quarter note C5. A slur covers the next four notes: a quarter note B-flat4, a quarter note A4, a quarter note G4, and a quarter note F4. This is followed by a half note E4. A slur covers the next four notes: a quarter note D4, a quarter note C4, a quarter note B-flat3, and a quarter note A3. The system ends with a double bar line.

Handwritten musical notation for the first staff of the exercise. It begins with a treble clef and a key signature of one sharp (F#). The melody consists of the following notes: F#4 (quarter), G#4 (quarter), A4 (quarter), B4 (quarter), C5 (quarter), B4 (quarter), A4 (quarter), G#4 (quarter), F#4 (quarter), E4 (half). There are slurs over the first four notes and the last four notes.

280.

[24/6]

Handwritten musical notation for the first staff of 'The Rose Tree'. The staff is in treble clef with a key signature of one sharp (F#). The melody begins with a quarter rest, followed by a quarter note G4, a quarter note A4, and a quarter note B4. This is followed by a half note C5, a half note B4, and a half note A4. The staff ends with a double bar line.

Handwritten musical notation for the first staff of 'The Rose Tree'. The staff is in 4/4 time, indicated by a treble clef and a key signature of one flat (B-flat). The melody consists of the following notes: G4 (quarter), A4 (quarter), Bb4 (quarter), A4 (quarter), G4 (quarter), F4 (quarter), E4 (quarter), D4 (quarter), C4 (half), and a final double bar line.