

Gioacchino Rossini
La Cenerentola Overture

CORNO II.

Maestoso

in Mi b

in Mi b

1

3

3

ff

ff

1

ff *stacc.*

3

3

3

1

p

p stacc.

f

2

p

Allegro vivace

7

7

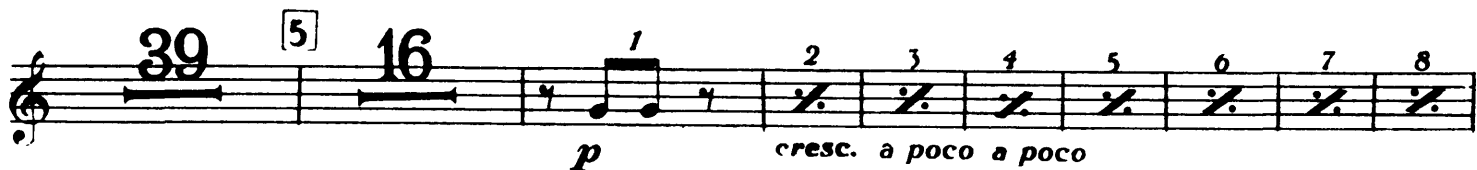
1

p

f

f

HORN II



HORN II

Musical score for Horn II, measures 1-39. The score is written in treble clef with a key signature of one flat (B-flat). The tempo is marked *Allegro*. The score includes various dynamics and articulations.

Measures 1-39:

- Measure 1: *p*
- Measure 2: *ff*
- Measure 3: *p*
- Measure 4: *ff*
- Measure 5: *p*
- Measure 6: *p*
- Measure 7: *f*
- Measure 8: *sf*
- Measure 9: *pp*
- Measure 10: *p*
- Measure 11: *cresc.*
- Measure 12: *ff*
- Measure 13: *ff*
- Measure 14: *ff*
- Measure 15: *ff*
- Measure 16: *ff*
- Measure 17: *ff*
- Measure 18: *ff*
- Measure 19: *ff*
- Measure 20: *ff*
- Measure 21: *ff*
- Measure 22: *ff*
- Measure 23: *ff*
- Measure 24: *ff*
- Measure 25: *ff*
- Measure 26: *ff*
- Measure 27: *ff*
- Measure 28: *ff*
- Measure 29: *ff*
- Measure 30: *ff*
- Measure 31: *ff*
- Measure 32: *ff*
- Measure 33: *ff*
- Measure 34: *ff*
- Measure 35: *ff*
- Measure 36: *ff*
- Measure 37: *ff*
- Measure 38: *ff*
- Measure 39: *ff*

Rehearsal marks are indicated by boxed numbers: 7, 8, and 9.

Articulations include accents (*>*) and slurs.

Dynamic markings include *p* (piano), *ff* (fortissimo), *sf* (sforzando), *pp* (pianissimo), and *cresc.* (crescendo).

Tempo marking: *Allegro*.

Ending marking: *smorz.* (smorzando).

4

10

HORN II

