

Gioacchino Rossini  
La Cenerentola Overture

TROMBONE

**Maestoso**

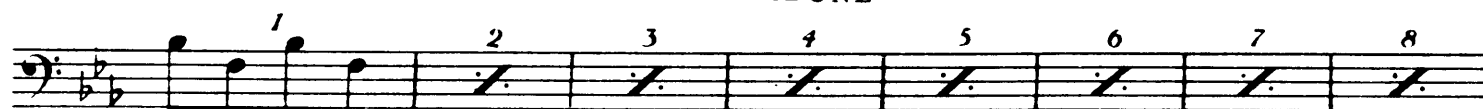
Maestoso section of the Trombone part. The music is in 3/4 time and begins with a key signature of two flats. The first staff contains measures 1 through 4, featuring a half note, a quarter note, and two measures of a triplet of eighth notes. The second staff contains measures 5 through 8, with a half note, a quarter note, and a triplet of eighth notes. The third staff contains measures 9 through 12, with a half note, a quarter note, and a triplet of eighth notes. The fourth staff contains measures 13 through 16, with a half note, a quarter note, and a triplet of eighth notes. The section concludes with a double bar line and a key signature change to one flat.

**Allegro vivace**

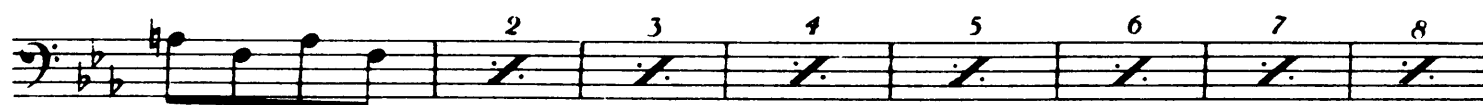
Allegro vivace section of the Trombone part. The music is in 2/4 time and begins with a key signature of one flat. The first staff contains measures 17 through 20, featuring a half note, a quarter note, and a triplet of eighth notes. The second staff contains measures 21 through 24, with a half note, a quarter note, and a triplet of eighth notes. The third staff contains measures 25 through 28, with a half note, a quarter note, and a triplet of eighth notes. The fourth staff contains measures 29 through 32, with a half note, a quarter note, and a triplet of eighth notes. The section concludes with a double bar line and a key signature change to two flats.

(Tr. be)

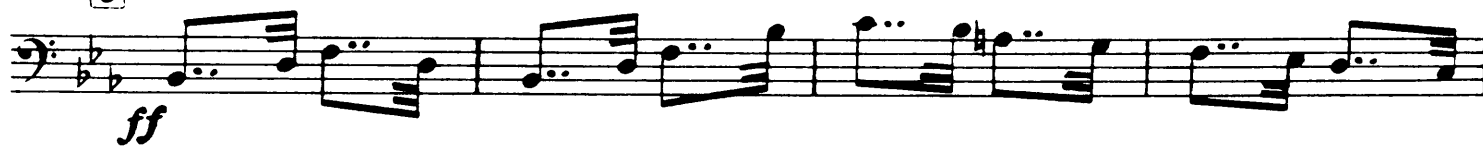
TROMBONE



*mf cresc. a poco a poco*



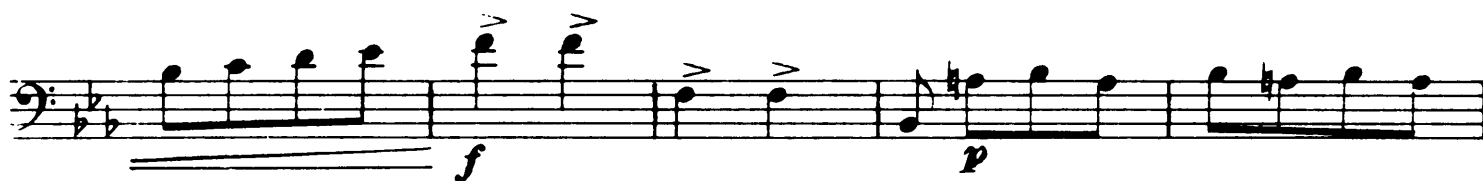
6



*ff*



*p*



*f*

*p*

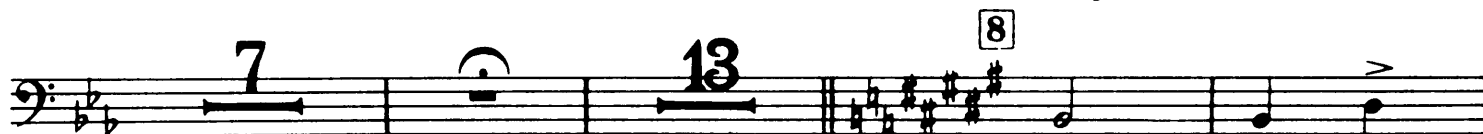


*f*

7



*f*

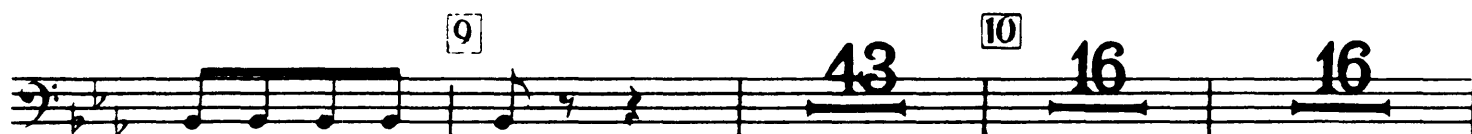


8

*f*



**TROMBONE**



(Tr be)



*mf cresc. a poco a poco*

